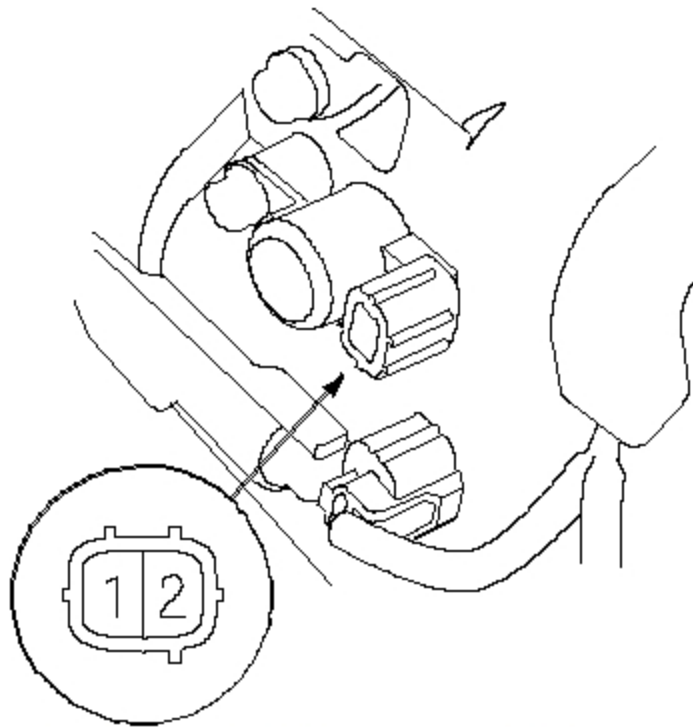


Inhibitor Solenoid Test

1. Disconnect the inhibitor solenoid connector.



2. Measure inhibitor solenoid resistance at the connector terminals.

STANDARD:

11.7-21.0 Ω

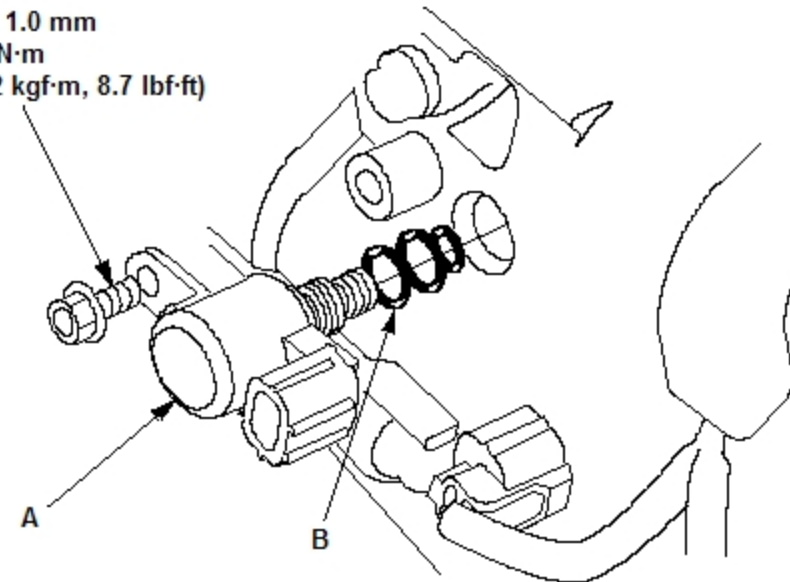
3. Replace the inhibitor solenoid if the resistance is out of standard.
4. If the resistance is within the standard, connect the battery positive terminal to inhibitor solenoid connector terminal No. 2, and connect the battery negative terminal to the connector terminal No. 1. A clicking sound should be heard. Replace the inhibitor solenoid if no clicking sound is heard.

Inhibitor Solenoid Replacement

1. Disconnect the inhibitor solenoid connector, and remove the inhibitor solenoid.



6 x 1.0 mm
12 N·m
(1.2 kgf·m, 8.7 lbf·ft)



2. Install the new inhibitor solenoid (A) with the new O-rings (B). When installing the solenoid, do not allow dust or other foreign particles to enter the transmission.
3. Check the connector for rust, dirt, or oil, then connect the connector securely.